

## Características

Renda Fixa CDI	42,91%
Renda Fixa Inflação	40,98%
Fundos de Participações	6,36%
Renda Variável	5,15%
Fundo Imobiliário	1,93%
Internacional Europa	1,64%
Internacional Global	0,86%
Empréstimos	0,17%



**Política de Investimentos:** Investe os recursos, principalmente, em cotas de fundos que atuam em diversos mercados, sem o compromisso de concentração em fator de risco específico.

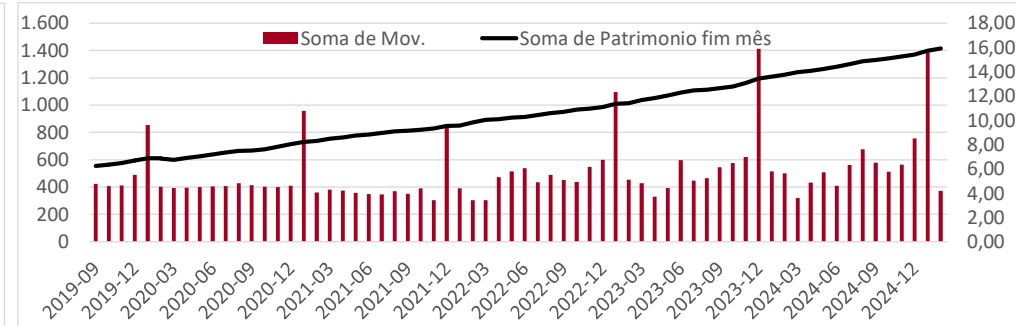
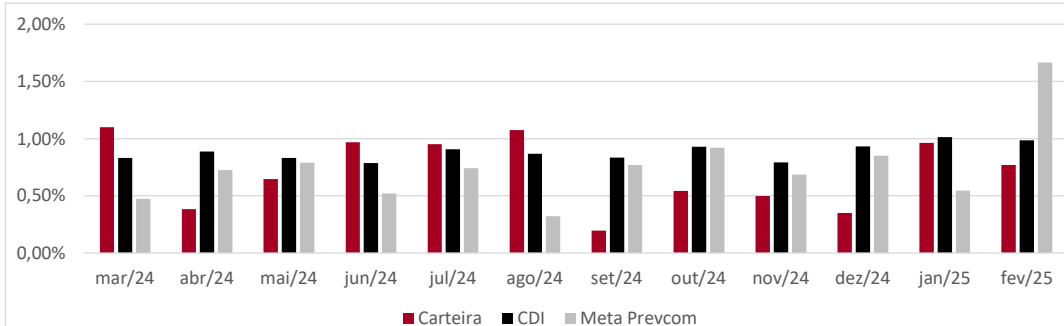
Meta Prevcom:  
IPCA+5% até 04/20  
IPCA+4% até 12/24  
IPCA+4,5% 2025

Retorno (%)	Ano	12 meses	24 meses
Carteira	1,73%	8,79%	22,50%
CDI	2,01%	11,13%	25,28%
IPCA	1,47%	5,06%	9,78%
Meta Prevcom	2,22%	9,38%	18,80%
IMA-B5	2,55%	7,49%	18,71%
Poupança	1,31%	7,25%	15,65%
IBOVESPA	2,09%	-4,82%	17,03%
MSCI World	-3,06%	33,83%	57,44%
MSCI Europe	4,46%	27,11%	33,29%

\* Cf. MP 567/12

## Gráficos

Retorno Mensal - Últimos 12 meses



Retorno Mensal (%)	fev/25	jan/25	dez/24	nov/24	out/24	set/24	ago/24	jul/24	jun/24	mai/24	abr/24	mar/24
Carteira	0,77%	0,96%	0,35%	0,50%	0,54%	0,20%	1,07%	0,95%	0,97%	0,65%	0,38%	1,10%
CDI	0,99%	1,01%	0,93%	0,79%	0,93%	0,84%	0,87%	0,91%	0,79%	0,83%	0,89%	0,83%
IPCA	1,31%	0,16%	0,52%	0,39%	0,56%	0,44%	-0,02%	0,38%	0,21%	0,46%	0,38%	0,16%
Meta Prevcom	1,66%	0,55%	0,85%	0,69%	0,92%	0,77%	0,32%	0,74%	0,52%	0,79%	0,72%	0,47%
IMA-B5	0,65%	1,88%	-0,28%	0,36%	0,74%	0,40%	0,59%	0,91%	0,39%	1,05%	-0,20%	0,77%
Poupança	0,63%	0,67%	0,58%	0,57%	0,60%	0,57%	0,57%	0,57%	0,54%	0,59%	0,60%	0,53%
IBOVESPA	-2,64%	4,86%	-4,28%	-3,12%	-1,60%	-3,08%	6,54%	3,02%	1,48%	-3,04%	-1,70%	-0,71%
MSCI World	-0,50%	-2,58%	-0,45%	9,45%	3,90%	-2,06%	2,40%	3,59%	8,10%	5,64%	-0,45%	3,25%
MSCI Europe	3,86%	0,58%	-0,25%	2,83%	-0,27%	-3,38%	3,61%	3,98%	3,53%	5,51%	1,01%	3,58%

### Composição da Carteira

## Retorno Nominal em % | Retorno Relativo ao índice de referência

## Performance dos Fundos em Carteira

Performance dos Fundos em Carteira			Mês			Ano		12 meses		Início do investimento			Volatilidade	Patrimônio R\$ milhões
Nome	Índice ref.	% PL	Início	Nominal	Relativo	Nominal	Relativo	Nominal	Relativo	Nominal	Relativo			
Bela Cintra FI RF	Meta Prevcom	36,30%	13/nov/13	1,07%	-0,59%	1,95%	-0,26%	9,71%	0,32%	253,82%	36,98%	0,49%	R\$	512,87
Itaú Institucional Optimus RF LP FICFI	CDI	6,52%	29/abr/22	0,78%	79,20%	1,59%	79,00%	12,80%	115,00%	39,93%	102,07%	0,79%	R\$	92,08
Itaú Institucional RF Referenciado DI	CDI	5,50%	15/fev/24	1,00%	101,80%	2,06%	102,52%	11,38%	102,22%	11,89%	102,56%	0,07%	R\$	77,77
Itaú Inst Global Dinâmico RF	CDI	4,72%	20/fev/20	0,98%	99,15%	1,97%	97,96%	11,48%	103,13%	56,10%	105,33%	0,54%	R\$	66,71
Itau Inst BOV11 FIC FIA	Ibovespa	4,26%	04/ago/23	-2,39%	0,26%	2,39%	0,30%	-4,09%	0,74%	3,94%	1,19%	13,83%	R\$	60,16
BTGP Economia Real FIP Multi	IPCA+6,5%	3,61%	19/out/20	-0,17%	-1,99%	-0,34%	-2,88%	2,53%	-9,41%	107,74%	32,82%		R\$	51,07
Itaú Institucionais Legend RF LP Fc	CDI	3,58%	02/out/19	1,24%	125,49%	2,17%	107,91%	14,06%	126,31%	66,50%	118,67%	1,52%	R\$	50,59
BNP Paribas Cred Inst FICFI RF CP LP	CDI	3,23%	11/out/23	1,04%	105,09%	2,14%	106,47%	11,68%	104,92%	16,95%	106,83%	0,08%	R\$	45,68
Itaú Inst RF Inflação 5 FICFI	IMA-B5	2,89%	19/jun/19	0,64%	-0,01%	2,51%	-0,03%	7,30%	-0,20%	59,09%	-1,72%	2,25%	R\$	40,86
XP Corporate Light FI RF CP LP	CDI	2,21%	24/jan/23	1,04%	105,24%	2,11%	105,07%	11,90%	106,90%	28,57%	106,81%	0,27%	R\$	31,26
Santander RF Ref DI Tit Público Hiper	CDI	2,00%	21/nov/24	0,98%	99,29%	2,05%	102,23%			3,21%	99,64%	0,07%	R\$	28,21
Bradesco RF Referenciado DI Federal E	CDI	1,96%	12/ago/24	0,96%	97,36%	2,00%	99,38%			6,05%	97,62%	0,06%	R\$	27,75
Itaú Soberano RF Simples LP FICFI	CDI	1,77%	02/set/19	0,98%	99,02%	2,02%	100,41%	11,05%	99,26%	55,86%	98,38%	0,05%	R\$	24,96
Sul America Cred Institucional ESG FI R	CDI	1,71%	21/jun/23	1,08%	109,96%	2,24%	111,68%	12,69%	113,97%	25,14%	122,77%	0,28%	R\$	24,23
Vot Allianzgi Euro Eq Growth FIM IE	MSCI Europe	1,64%	22/mai/19	-0,45%	-4,31%	0,87%	-3,58%	14,13%	-12,98%	103,55%	5,26%	17,65%	R\$	23,14
Porto Seguro RF DI CP	CDI	1,62%	18/jul/24	1,03%	104,68%	2,11%	105,24%			7,08%	102,52%	0,12%	R\$	22,87
Sul América Excellence FI RF CP	CDI	1,54%	24/jan/23	1,02%	103,26%	2,12%	105,50%	12,10%	108,70%	29,41%	109,92%	0,15%	R\$	21,83
BB RF Referenciado DI Tit Pub	CDI	1,43%	20/fev/25	0,98%	99,37%					0,29%	99,69%	0,06%	R\$	20,14
Bradesco Inst FIC FI RF IMA-B5	IMA-B5	1,37%	16/ago/23	0,62%	-0,03%	2,48%	-0,06%	7,14%	-0,36%	11,48%	-0,56%	2,27%	R\$	19,41
LFT	CDI	1,22%	05/dez/23	0,73%	74,52%	1,44%	71,88%	9,67%	86,86%	12,58%	90,12%		R\$	17,28
Inter Corporate RF Crédito Privado	CDI	1,03%	15/mai/24	0,99%	100,42%	2,04%	101,64%			8,95%	101,62%	0,07%	R\$	14,55
BTG Pactual Inv de Impacto FIP Mult	IPCA+6,5%	1,02%	30/ago/21	-0,16%	-1,98%	-0,67%	-3,21%	12,76%	0,82%	21,41%	-31,43%	22,02%	R\$	14,43
BTG Pactual Créd Corp I FIQFI RF CP	CDI	0,94%	30/ago/21	1,12%	113,73%	2,32%	115,36%	12,37%	111,17%	53,73%	114,23%	0,22%	R\$	13,22
Schroder Sustent Ações Globais IS IE	MSCI World	0,86%	24/mai/24	-4,06%	-3,56%	-5,03%	-1,97%			16,18%	-8,62%	16,93%	R\$	12,13
Capitânia Reit Inst Fc FIM CP	IFIX	0,85%	25/jun/19	1,50%	-1,84%	-0,54%	-0,71%	1,10%	8,20%	53,65%	33,51%	3,88%	R\$	12,06
MAG Renda Fixa FI	CDI	0,80%	13/set/23	1,02%	103,47%	2,20%	109,30%	11,10%	99,69%	17,27%	101,68%	0,24%	R\$	11,36
BTG Pactual Explorér Inst FI RF LP	CDI	0,69%	13/mar/24	0,97%	98,28%	2,03%	101,15%			8,04%	75,10%	1,25%	R\$	9,75
AZ Quest Small Mid Caps Inst. FICFIA	SMLL	0,55%	09/jun/20	-3,25%	0,61%	-0,56%	-2,56%	-1,27%	17,28%	12,37%	34,49%	9,92%	R\$	7,83
Pátria Private Equity Fund VII Feeder Ir	IPCA+7%	0,51%	28/set/23	-0,06%	-1,92%	-0,16%	-2,78%	19,05%	6,58%	15,03%	-3,33%		R\$	7,18
Tivio Banks RF Crédito Privado FI	CDI	0,43%	10/nov/23	0,99%	100,37%	2,01%	100,01%	11,47%	103,05%	15,35%	103,79%	0,06%	R\$	6,09
Santander RF IMA-B5 Premium FICFI	IMA-B5	0,42%	18/dez/23	0,63%	-0,02%	2,51%	-0,04%	7,24%	-0,26%	9,10%	-0,32%	2,25%	R\$	5,96
BTG Pactual Economia Real II FIPM CL/	IPCA+8%	0,40%	04/mai/23	-0,88%	-2,81%	-1,79%	-4,57%	2,88%	-10,65%	-18,09%	-42,74%		R\$	5,67
Spectra VI Institucional FIP Multiestrat	IPCA+8%	0,40%	31/mar/23	4,34%	2,41%	3,54%	0,76%	-11,96%	-25,49%	47,42%	21,17%		R\$	5,67
VBI Prime Properties FII	IFIX	0,37%	20/dez/23	8,60%	5,26%	2,33%	2,16%	-18,58%	-11,48%	-16,08%	-13,25%		R\$	5,27
Fator Verita Multiestratégia Imobiliári	IFIX	0,36%	22/jul/24	5,56%	2,22%	-0,21%	-0,38%			-29,76%	-21,81%		R\$	5,02
Rio Bravo Renda Varejo FII	IFIX	0,35%	20/dez/23	-1,24%	-4,58%	-10,29%	-10,45%	-22,57%	-15,47%	-20,60%	-17,77%		R\$	4,97
Vinci Selection Equities FIA	Ibovespa	0,34%	30/nov/22	-2,41%	0,24%	1,77%	-0,32%	-7,77%	-2,95%	1,96%	-7,21%	13,49%	R\$	4,75
Perfin Voyager FIP Infra	IPCA+6%	0,27%	13/jun/24	18,01%	16,23%	18,13%	15,67%			84,59%	76,21%	30,50%	R\$	3,85
Carteira de Empréstimos	CDI	0,17%	05/dez/23	0,73%	74,52%	1,44%	71,88%	9,67%	86,86%	12,58%	90,12%		R\$	2,38
Vinci Partners IV Feeder	IPCA+6%	0,11%	25/abr/24	-1,49%	-3,27%	5,92%	3,46%			-3,42%	-13,30%		R\$	1,53
BTG Pactual Infraestrutura III FIP Multi	IPCA+8%	0,04%	02/jul/24	29,63%	27,70%	16,02%	13,24%			-27,30%	-36,56%		R\$	0,50

<b>Patrimônio Total:</b>	<b>R\$</b>	<b>1.413,04</b>
--------------------------	------------	-----------------